



Cranial ornamentation in the Late Cretaceous nodosaurid ankylosaur *Hungarosaurus*

Attila Ósi^{1,3}, János Magyar¹, Károly Rosta¹ and Matthew Vickaryous²

¹Department of Paleontology, Eötvös Loránd University, Budapest, Hungary

²Department of Biomedical Sciences, University of Guelph, Guelph, Canada

³Hungarian Natural History Museum, Budapest, Hungary

ABSTRACT

Bony cranial ornamentation is developed by many groups of vertebrates, including ankylosaur dinosaurs. To date, the morphology and ontogenetic origin of ankylosaurian cranial ornamentation has primarily focused on a limited number of species from only one of the two major lineages, Ankylosauridae. For members of the sister group Nodosauridae, less is known. Here, we provide new details of the cranial anatomy of the nodosaurid *Hungarosaurus* from the Santonian of Europe. Based on a number of previously described and newly identified fragmentary skulls and skull elements, we recognize three different size classes of *Hungarosaurus*. We interpret these size classes as representing different stages of ontogeny. Cranial ornamentation is already well-developed in the earliest ontogenetic stage represented herein, suggesting that the presence of outgrowths may have played a role in intra- and interspecific recognition. We find no evidence that cranial ornamentation in *Hungarosaurus* involves the contribution of coossified osteoderms. Instead, available evidence indicates that cranial ornamentation forms as a result of the elaboration of individual elements. Although individual differences and sexual dimorphism cannot be excluded, the observed variation in *Hungarosaurus* cranial ornamentation appears to be associated with ontogeny.

Submitted 30 October 2020

Accepted 4 February 2021

Published 3 March 2021

Corresponding author

Attila Ósi, hungaros@gmail.com

Academic editor

Andrew Farke

Additional Information and
Declarations can be found on
page 18

DOI 10.7717/peerj.11010

© Copyright
2021 Ósi et al.

Distributed under
Creative Commons CC-BY 4.0

OPEN ACCESS

Subjects Evolutionary Studies, Paleontology, Zoology

Keywords Skull, *Hungarosaurus*, Ankylosaur, Cranial ornamentation, Osteoderm fusion, Cranial elaboration, Sexual dimorphism, Late Cretaceous

INTRODUCTION

Development of osseous cranial ornamentation is a relatively common occurrence in the evolutionary history of terrestrial vertebrates (*De Buffrénil, 1982*). Among reptiles, cranial ornamentation, including frills, crests, horns, bosses, or casques, is known for representative members of many fossil and extant groups (e.g., *Gadow, 1901; Romer, 1956; Clarac et al., 2017; Mayr, 2018*). The ultimate morphology of cranial ornamentation, especially among skeletally mature adults, is often highly variable and species-specific (e.g., *Otto, 1909; Montanucci, 1987*). As currently understood, this vast diversity is the result of two principal modes of morphogenesis: (1) the fusion of additional skeletal

elements, commonly identified as osteoderms, with the skull; and (2) the elaboration of individual cranial elements (Moss, 1969; Vickaryous, Russell & Currie, 2001).

Osteoderms (= dermal sclerifications, osteoscutes) are bone-rich elements that form within the dermis of the skin (Moss, 1969; Vickaryous & Sire, 2009). As demonstrated by modern lizards, osteoderms that develop across the head contribute to the formation of a highly variable polygonal-like pattern of cranial ornamentation that embosses the superficial surface of the skull and mandible (Figs. 1A–1D). The extent to which osteoderm contact or even fuse with the skull is both species-specific and ontogenetically variable (Vickaryous, Russell & Currie, 2001; Bhullar, 2011; Paluh, Griffing & Bauer, 2017; Maisano et al., 2019; Laver et al., 2020). While in some species, osteoderms always remain suspended within the dermis itself (e.g., some gekkotan lizards; Paluh, Griffing & Bauer, 2017; Laver et al., 2020), in other taxa they gradually fuse with subadjacent bones of the skull (e.g., helodermatids, xenosaurids; Bhullar, 2011; Maisano et al., 2019). As osteoderms develop within the skin, their development is not restricted to the area of an individual bone, and hence they routinely occupy positions that overlap sutural boundaries (Vickaryous, Russell & Currie, 2001).

In addition to the fusion of osteoderms, cranial ornamentation may also develop as a result of the elaboration or exaggerated outgrowth of individual cranial (and mandibular) elements (Figs. 1E–1H) (e.g., Montanucci, 1987; Vickaryous, Russell & Currie, 2001; Hieronymus et al., 2009). In some species, particularly among aged individuals, this form of exaggerated outgrowth may become continuous across multiple adjacent bones (e.g., “hummocky rugosities”; Hieronymus et al., 2009).

Cranial ornamentation is one of the most diagnostic features of the extinct archosaur clade Ankylosauria (Maryańska, 1977; Coombs Jr, 1978; Carpenter et al., 2001; Vickaryous, Maryańska & Weishampel, 2004). For most ankylosaur taxa, the dorsolateral surfaces of the cranium and the posterolateral surface of the mandible are externally (superficially) embossed with cranial ornamentation. Although intraspecific (and possibly ontogenetic) variation exists, details of the size, shape and pattern of cranial ornamentation, often referred to as ‘caputegulae’ (Blows, 2001), have long been recognized as taxonomically informative (e.g., Parks, 1924; Coombs Jr, 1971; Coombs Jr, 1978; Blows, 2001; Penkalski, 2001; Arbour & Currie, 2013; Arbour & Currie, 2016). This includes the classical distinction of the two major clades of ankylosaurs: Ankylosauridae and Nodosauridae (Coombs Jr, 1978).

The ontogenetic origin of cranial ornamentation in ankylosaurs has primarily focused on a handful of species (Leahey et al., 2015), most of which are members of Ankylosauridae (Coombs Jr, 1971; Vickaryous, Russell & Currie, 2001; Carpenter et al., 2001; Hill, Witmer & Norell, 2003). Based on the investigation of multiple specimens of the ankylosaurids *Euoplocephalus* and *Pinacosaurus*, including material attributed to subadult (i.e., not skeletally mature) individuals, the cranial ornamentation of these forms are interpreted involving both the coossification of osteoderms with the skull and the exaggerated outgrowth of individual cranial elements (Vickaryous, Russell & Currie, 2001; Hill, Witmer & Norell, 2003; although see Carpenter et al., 2001). A similar combination of processes has been proposed for the basal ankylosaurian *Kunbarrasaurus ieverisi* (Leahey et al., 2015). In

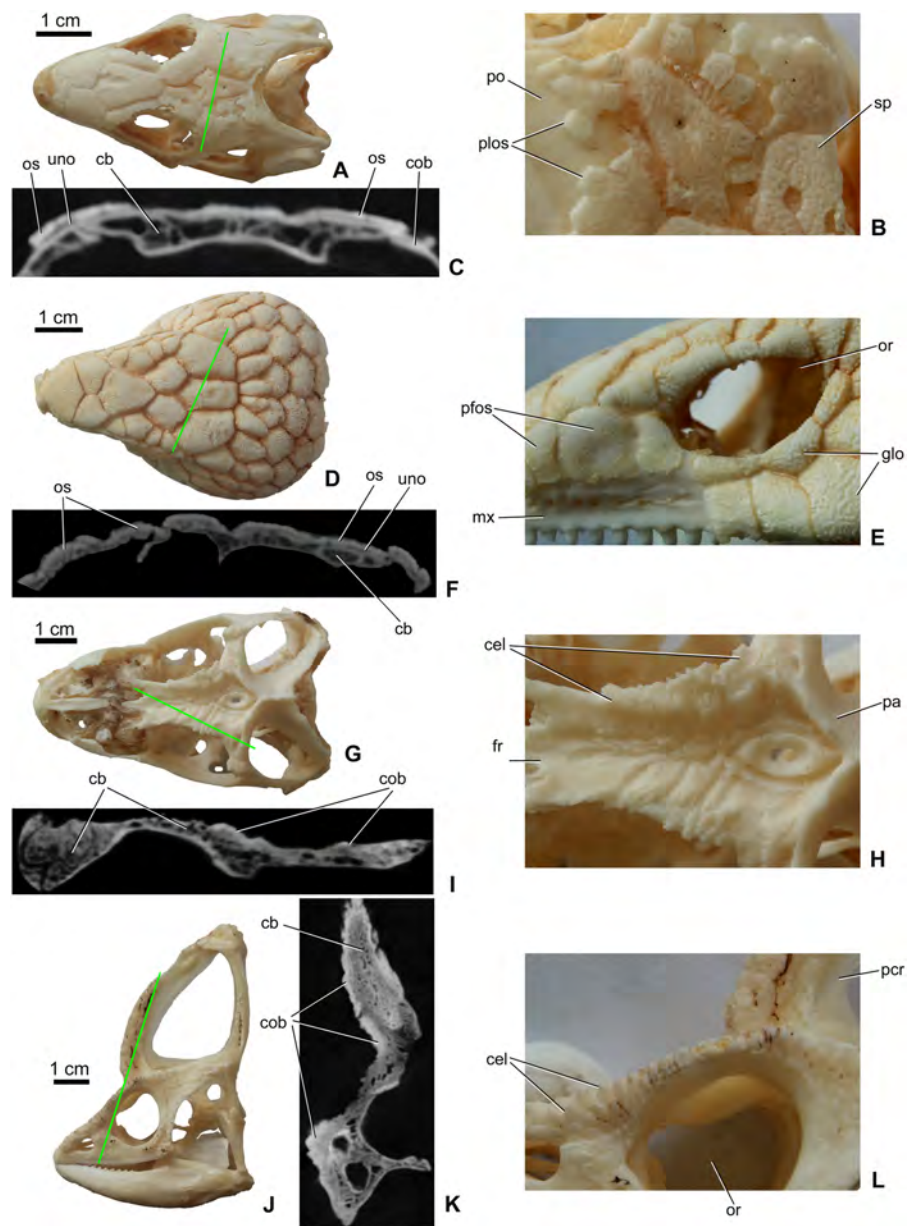


Figure 1 Surface view and microCT cross sectional images (in level of the green line) of cranial ornamentation developed as either osteodermal fusion (A–F) or elaboration of skull bones (G–L) in squamates. (A) *Tiliqua scincoides* skull (MDE R45) in dorsal view. (B) Partially fused polygonal osteoderms on the skull of *T. scincoides*. (C) Inner structure of the skull bones and covering osteoderms of *T. scincoides*. (D) *Tiliqua nigrolutea* skull (MDE R47) in dorsal view. (E) Partially fused polygonal osteoderms on the skull of *T. nigrolutea*. (F) Inner structure of the skull bones and covering osteoderms of *T. nigrolutea*. (G) *Iguana iguana* skull (MDE R20) in dorsal view. (H) Elaboration of skull bones in *I. iguana*. (I) Inner structure of the elaborated skull bones in *I. iguana*. (J) *Chamaeleo calypttratus* (MDE R43) skull in lateral view. (K) Inner structure of the elaborated skull bones in *C. calypttratus*. (L) Elaboration of skull bones in *C. calypttratus*. Abbreviations: cb, cancellous bone; cel, cranial elaboration; cob, compact bone; fr, frontal; glo, globular ornamentation; mx, maxilla; or, orbit; os, osteoderm; pa, parietal; pcr, parietal crest; pfos, partially fused osteoderms; plos, polygonal osteoderms; po, postorbital; uno, unossified part between osteoderm and skull bone; sp, small pits.

Full-size DOI: 10.7717/peerj.11010/fig-1

contrast, osteoderms do not appear to fuse with the skulls of some basal taxa *Cedarpelta* (Carpenter *et al.*, 2001) and *Gastonia* (Kinneer, Carpenter & Shaw, 2016). Hence, cranial ornamentation in these species appears to be exclusively the result of elaborated outgrowth of individual elements. Among nodosaurids, less is known. Although a partial skull (attributed to an unidentified species) was reported to demonstrate a rugose external texture, with no evidence of “... overgrowth of dermal bone” (Jacobs *et al.*, 1994), the specimen is fragmentary, incomplete, and skeletally immature. Therefore, the developmental processes involved in the formation of cranial ornamentation among nodosaurids remains uncertain.

Cranial ornamentation in extant amniotes

Many extant groups of non-iguanian lizards develop osteoderms across the dorsal and lateral surfaces of the skull (Table 1; see also Gadow, 1901; Moss, 1969; Montanucci, 1987; Etheridge & De Queiroz, 1988; Vickaryous & Sire, 2009). Although the morphology and arrangement of osteoderms across the skull is taxonomically variable (e.g., Figs. 1A–1D; see also Mead *et al.*, 2012; Ledesma & Scarpetta, 2018), evidence for sexual dimorphism remains limited (Table 1). For most species, both males and females develop comparable arrangements of osteoderm-based ornamentation (see references in Table 1). One possible exception is the skeletally mature marine iguana (*Amblyrhynchus cristatus*). Marine iguanas are one of the only iguanid lizards that have been identified as developing osteoderms, and these elements only form on the head (Etheridge & De Queiroz, 1988). In females, cranial ornamentation is reportedly less developed than that of males (Eibl-Eibesfeldt, 1966).

Unlike lizards, osteoderms are absent from the heads of modern archosaurs (birds and crocodylians), with the possible exception of the bony crocodylian palpebral (eyelid bone) (Vickaryous & Hall, 2008).

Whereas cranial ornamentation in many non-iguanians is characterized by osteoderms, that of iguanians is dominated by the elaboration and outgrowth of individual skull (and specifically dermatocranial) elements (Etheridge & De Queiroz, 1988; see Table 1). This outgrowth form of cranial ornamentation primarily manifests as rugosities with variably developed crests, pits and bumps (Hieronymus *et al.*, 2009, Figs. 1E–1F), although some taxa may develop large horn-like structures as well. For example, in species of *Phrynosoma* horns and bosses can develop on both the parietal and squamosal (Lang, 1989; Vickaryous, Russell & Currie, 2001; Powell *et al.*, 2017). Although the number, morphology and orientation of these protuberances can vary among *Phrynosoma* species, there is no evidence that they are sexual dimorphic (Powell *et al.*, 2017, see Table 1). Similarly, anoles (Dactyloidae) also develop taxon-specific cranial ornamentation that is present in both sexes (Etheridge & De Queiroz, 1988).

The exaggerated development of bony horns and crests is also characteristic of many archosaurs, including fossil (e.g., *Ceratosuchus* Schmidt, 1938; Bartels, 1984; Brochu, 2006; Brochu, 2007; Bickelmann & Klein, 2009) and extant (e.g., *Crocodylus rhombifer*; Brochu *et al.*, 2010) crocodylians. Among modern crocodylians, these protuberances are not sexually dimorphic, but may be used for species recognition in ecosystems where multiple taxa of crocodylians exist (Bartels, 1984). Cranial ornamentation is also characteristic of many

Table 1 Osseous cranial ornamentation in extant sauropsid vertebrates.

Development of cranial ornamentation	Sexual variation	Higher-level taxon	Family	Genus/species example	Morphology	Function	Reference
Osteoderms	Monomorphic	Squamates	Helodermatidae	<i>Heloderma</i>	Flat, scale-like	?	<i>Mead et al. (2012)</i>
Osteoderms	Monomorphic	Squamates	Gerrhonotidae	<i>Abronia, Barisia, Mesaspis</i>	Flat, scale-like	?	<i>Ledesma & Scarpetta (2018)</i>
Osteoderms	Monomorphic	Squamates	Gerrhosauridae	<i>Angolosaurus, Tracheloptychus</i>	Flat, scale-like or sharply keeled scales	?	<i>Nance (2007)</i>
Osteoderms	Monomorphic	Squamates	Scincidae	<i>Eugongylus, Eumeces, Tiliqua</i>	Flat, polygonal	?	<i>Čerňanský & Hutchinson (2013)</i>
Osteoderms	Monomorphic	Squamates	Xenosauridae	<i>Xenosaurus</i>	Flat, scale-like	?	<i>Smith, Lemos-Espinal & Ballinger (1997)</i>
Osteoderms	Monomorphic	Squamates	Xantusiidae	<i>Lepidophyma gaigeae</i>	Flat, scale-like	Physical protection?	<i>Peterson & Bezy (1985) and Ramírez-Bautista et al. (2008)</i>
Osteoderms	Monomorphic	Squamates	Cordylidae	<i>Ouroborus, Cordylus cataphractus</i>	Flat or slightly domed, pointed	Intrasexual fight	<i>Broeckhoven, De Kock & Mouton (2017), Broeckhoven, Du Plessis & Hui (2017), Broeckhoven, DeKock & Hui (2018) and Flemming, Bates & Broeckhoven (2018)</i>
Osteoderms	Monomorphic	Squamates	Lanthanotidae	<i>Lanthanotus borneensis</i>	Small, flat to convex	?	<i>Maisano et al. (2002)</i>
Osteoderms	Monomorphic	Squamates	Lacertidae	<i>Lacerta strigata, Xantusia riversiana</i>	Flat, scale-like	?	<i>Čerňanský & Syromyatnikova (2019)</i>
Osteoderms	Monomorphic	Squamates	Gekkonidae	<i>Gekko gekko</i>	Flat, scale-like	?	<i>Laver et al. (2020)</i>
Osteoderms	Monomorphic	Squamates	Phyllodactylidae	<i>Tarentola mauritanica</i>	Flat, scale-like	?	<i>Paluh, Griffing & Bauer (2017) and Levrat-Calviac & Zylberberg (1986)</i>
Osteoderms	Monomorphic	Squamates	Varanidae	<i>Varanus komodoensis</i>	Small, vermiform osteoderms	?	<i>Maisano et al. (2019) and Kirby et al. (2020)</i>
Osteoderms	Dimorphic	Squamates	Iguanidae	<i>Amblyrhynchus</i>	Knob-like	Interlock the horns during breeding	<i>Eibl-Eibesfeldt (1966) and Wikelski & Trillmich (1997)</i>
Skull elaboration	Monomorphic	Squamates	Phrynosomatidae	<i>Phrynosoma</i>	High spikes	Interspecific	<i>Montanucci (1987) and Powell et al. (2017)</i>
Skull elaboration	Monomorphic	Squamates	Dactyloidae	<i>Anolis</i> spp.	Hummocky rugosity, small crests	Interspecific	<i>Etheridge & De Queiroz (1988) and Tinius (2019)</i>
Skull elaboration	Monomorphic	Squamates	Carphodactylidae	<i>Phyllurus cornutus</i>	Hummocky rugosity	?	<i>Doughty & Shine (1995)</i>
Skull elaboration	Monomorphic	Squamates	Teiidae	<i>Cnemidophorus lemniscatus</i>	Hummocky rugosity, small crests	?	<i>Anderson & Vitt (1990)</i>
Skull elaboration	Monomorphic	Squamates	Corytophanidae	<i>Corytophanes</i>	Casque, crest	?	<i>Lang (1989), Taylor et al. (2017) and Smith (2011)</i>
Skull elaboration	Monomorphic	Turtles	Chelidae	<i>Chelus fimbriata</i>	Shallow hummocky rugosity	?	<i>Garbin & Caramaschi (2015)</i>
Skull elaboration	Monomorphic	Turtles	Chelydridae	<i>Macrochelys temminckii</i>	Hummocky rugosity, small grooves	?	–

(continued on next page)

Table 1 (continued)

Development of cranial ornamentation	Sexual variation	Higher-level taxon	Family	Genus/species example	Morphology	Function	Reference
Skull elaboration	Monomorphic	Turtles	Testudinidae	<i>Geochelone denticolata</i>	Hummocky rugosity, small grooves	?	Gaffney (1979)
Skull elaboration	Monomorphic	Crocodyles	Crocodylidae	<i>Crocodylus rhombifer</i>	Squamosal horn	Interspecific	Bartels (1984) and Brochu et al. (2010)
Skull elaboration	Monomorphic	Birds	Casuariidae	<i>Casuarius</i> spp.	Casque	Thermal radiator	Naish & Perron (2016) and Eastick et al. (2019)
Skull elaboration	Monomorphic	Birds	Bucorvidae	<i>Bucorvus</i> spp.	Frontal hump	Species recognition, amplify communication	Alexander, Houston & Campbell (1994)
Skull elaboration	Monomorphic	Birds	Numididae	<i>Numida meleagris</i>	Casque	Thermoregulation, vocalisation and intraspecific combat?	Mayr (2018)
Skull elaboration	Monomorphic	Birds	Megapodiidae	<i>Macrocephalon maleo</i>	Vauled skull	?	Green & Gignac (2019)
Skull elaboration	Monomorphic	Birds	Gruidae	<i>Balearica regulorum</i>	Frontal hump, horn-like tubercles on parietal	?	Mayr (2018)
Skull elaboration	Monomorphic	Birds	Anatidae	<i>Anas gibberifrons</i>	Frontal hump	Physiological, sensory, or acoustic function?	Mayr (2018)
Skull elaboration	Monomorphic	Birds	Cracidae	<i>Oreophasis derbianus</i> , <i>Pauxi</i>	Casque	Demonstrative of ability to survive	Vaurie (1968), González-García (1995) and Mayr (2018)
Skull elaboration	Monomorphic	Birds	Alcidae	<i>Fratercula arctica</i> , <i>Cerorhinca monocerata</i>	Crest or horn on the upper beak	Beak strengthening?	Jones (1993)
Skull elaboration	Monomorphic	Birds	Pelecanidae	<i>Pelecanus erythrorhynchos</i>	Crest on the upper beak	Display during breeding	Evans & Knopf (1993)
Skull elaboration	Monomorphic	Birds	Procellariidae	<i>Pagodroma nivea</i> , <i>Fulmarus glacialis</i>	Crest on the upper beak	?	Jouventin & Viot (1985)
Skull elaboration	Monomorphic	Birds	Chionididae	<i>Chionis minor</i>	Shield-like callosity	Physiological role?	Lowe (1916) and Mayr (2018)
Skull elaboration	Monomorphic	Birds	Musophagidae	<i>Musophaga violacea</i>	Casque	?	Mayr (2018)
Skull elaboration	Monomorphic	Birds	Icteridae	<i>Psarocolius decumanus</i>	Crest on the upper beak	?	Webster (1992) and Fraga & Kreft (2007)
Skull elaboration	Monomorphic	Birds	Threskiornithidae	<i>Geronticus calvus</i>		?	Kopij (1998)
Skull elaboration	Monomorphic	Birds	Meliphagidae	<i>Philemon corniculatus</i>	Crest on the beak	?	Mayr (2018)

(continued on next page)

Table 1 (continued)

Development of cranial ornamentation	Sexual variation	Higher-level taxon	Family	Genus/species example	Morphology	Function	Reference
Skull elaboration	Monomorphic	Birds	Cuculidae	<i>Crotophaga sulcirostris</i>	Deep upper beak	?	<i>Posso & Donatelli (2001) and Mayr (2018)</i>
Skull elaboration	Dimorphic	Squamates	Corytophanidae	<i>Basiliscus</i>	Casque, crest	Intersexual	<i>Lang (1989), Taylor et al. (2017) and Smith (2011)</i>
Skull elaboration	Dimorphic	Squamates	Chamaeleonidae	<i>Chameleo jacksoni, Triceros</i>	Crest, horns	Social significance, species recognition	<i>Rand (1961) and Eckhardt et al. (2012)</i>
Skull elaboration	Dimorphic	Birds	Phasianidae	<i>Tetrao urogallus</i>	Preorbital ridge	?	<i>Lindén & Väisänen (1986)</i>
Skull elaboration	Dimorphic	Birds	Anatidae	<i>Cygnus, Melanitta, Oxyura</i>	Frontal hump	Fat reservoir indicating individual fitness	<i>Horrocks, Perrins & Charmantier (2009), Lüps (1990) and Mayr (2018)</i>
Skull elaboration	Dimorphic	Birds	Anseranatidae	<i>Anseranas</i>	Frontal hump	?	<i>Mayr (2018)</i>
Skull elaboration	Dimorphic	Birds	Cracidae	<i>Crax</i>	casque	Demonstrative of ability to survive	<i>Buchholz (1991) and Mayr (2018)</i>
Skull elaboration	Dimorphic	Birds	Bucerotidae	<i>Rhyticeros</i>	Casque on upper beak	?	<i>Kemp (2001) and Mayr (2018)</i>
Osteoderms and skull elaboration	Monomorphic	Squamates	Anguidae	<i>Pseudopus (Ophisaurus) apodus</i>	Flat, scale-like, pitted osteoderms; grooved nasal, frontal, parietal	?	<i>Klembara et al. (2017)</i>

taxa of birds (Table 1). In most cases these elaborations and outgrowths are monomorphic (Mayr, 2018). One of the most obvious examples are cassowaries (*Casuarius* spp.), where males and females are similarly ornamented with elaborate casques on the skull roof (Naish & Perron, 2016). The internal bony architecture of this cranial ornamentation can also vary. For example, the casque on the upper bills of bucorvid and some bucerotid birds is typically dominated by an air-filled cavity and thin trabecular bone, but is reportedly solid bone in the greater helmeted hornbill (*Buceros vigil*) (Gamble, 2007).

Here we describe several fragmentary skulls and skull elements of the European Late Cretaceous (Santonian) nodosaurid ankylosaur, *Hungarosaurus* (Table 2). These specimens represent at least three different size classes (and likely different stages of ontogeny), and provide new information about the morphological diversity, development and possible function of cranial ornamentation of nodosaurid skulls. We compared our findings with gross anatomical and micro-computed tomography (microCT) data from the study of cranial ornamentation in modern lizards.

MATERIAL AND METHODS

Specimens

The Hungarian nodosaurid ankylosaur specimens used in this study (Table 2) are from the Upper Cretaceous (Santonian) Csehbánya Formation of the Iharkút vertebrate site, Bakony Mountains, western Hungary (Ósi et al., 2019; for geology and taphonomy, see Botfalvai, Ósi & Mindszenty, 2015; Botfalvai et al., 2016). Four partial nodosaurid ankylosaur skulls (Fig. 2) and various isolated skull elements (see Table 2 for all used specimens) from Iharkút are briefly described and compared in detail particularly focusing on the morphology, topographic distribution and origin of the cranial ornamentations. Two of the fragmentary skulls (holotype, MTM PAL 2013.23.1., Figs. 2A and 2D) and some isolated elements have been already described in more detail (Ósi, 2005; Ósi & Makádi, 2009; Ósi, Pereda-Suberbiola & Földes, 2014; Ósi et al., 2019), but cranial ornamentation was not discussed. The two new partial skulls (MTM PAL 2020.31.1., MTM PAL 2020.32.1., Figs. 2B, 2C, 2D and Data S1) have not been described in detail, and the comparative osteological description of these specimens are in Data S1.

The basis of this work is that all four skulls and isolated remains are thought to belong to *Hungarosaurus*. Although the presence of the much smaller *Struthiosaurus* at the site has also been confirmed by postcranial findings (Ósi & Prondvai, 2013; Ósi & Pereda-Suberbiola, 2017), the two new skulls are closer to *Hungarosaurus* based on the osteological features listed in Data S1. The postorbital crest of the specimen MTM PAL 2020.32.1. is, however, somewhat different from that of the holotype of *Hungarosaurus*.

In addition to the fossil specimens, we performed a comparative micro-computed tomography (microCT) investigation on one skull each of four extant lizard species: *Tiliqua scincoides* (MDE R45); *Tiliqua nigrolutea* (MDE R47); *Iguana iguana* (MDE R20); and *Chamaeleo calyptratus* (MDE R43).

Table 2 List of *Hungarosaurus* specimens used in this study.

Reference No.	Preserved skull elements (elements with bold used in this study)	Ontogenetic stage	First described in:
Holotype, MTM 2007.26.1.-2007.26.34.	Partial skull including the pre-maxillae , right postorbital and jugal , ?left prefrontal, lacrimal, and frontal , posterior part of the pterygoid, both quadrates, condylus occipitalis, 22 teeth, one hyoid? bone, ?vomer, anterior end of left nasal	Adult	<i>Ósi (2005)</i> , <i>Ósi & Makádi (2009)</i> , <i>Ósi et al. (2019)</i> and <i>Botfalvai, Prondvai & Ósi (2020)</i>
MTM PAL 2013.23.1	Skull fragment with parietal and basicranium	Adult?	<i>Ósi, Pereda-Suberbiola & Földes (2014)</i>
MTM PAL 2020.31.1.	Partial skull with most of the rostrum including the premaxillae , nasals , the right fragmentary maxilla and the right frontal-supraorbital-?prefrontal-?lacrimal complex.	Subadult-to adult?	This study
MTM PAL 2020.32.1.	Partial skull including the partial basicranium, most of the skull roof (frontal, postfrontal, parietal) between and behind the orbits, the two nasals , the left postorbital , left squamosal, most of the left quadrate and the distal end of the right quadrate.	Subadult?	This study
MTM V.2003.12	Isolated left premaxilla and partial maxilla	Juvenile	<i>Ósi & Makádi (2009)</i>
MTM PAL 2020.33.1.	Isolated Left premaxilla	Subadult?	This study
MTM V 2010.1.1.	Isolated left postorbital and jugal	Subadult?	<i>Ósi et al. (2012)</i>
MTM 2007.28.1.	Isolated left postorbital	subadult?	<i>Ósi & Makádi (2009)</i>
MTM 2007.27.1.	Isolated left frontal (originally described as nasal)	Subadult? to adult	<i>Ósi & Makádi (2009)</i>
MTM PAL 2020.34.1.	Isolated right nasal	adult?	This study

Methods

Specimens were collected between 2001 and 2019 and all of them are housed in the Vertebrate Paleontological Collection of the Hungarian Natural History Museum, Budapest (MTM). Specimens were prepared mechanically in the labs of the Department of Paleontology of the Eötvös University and the Hungarian Natural History Museum, and the bones were pieced together using cyanoacrylate glue.

For 3D reconstruction of the skulls (Fig. 2), we photographed each bone with a Canon EOS 600D DS126311 camera using photogrammetry. 2D images were converted to 3D images using open source 3DF Zephyr software (version 4.5.3.0). 3D images of bones also show the original surface texture of the bones. 3D files of each bone were assembled within the open source software Blender using Polygonal modeling and Sculpting techniques. Finally, we rendered a turntable video of the digitally finalized skull in Marmoset Toolbag

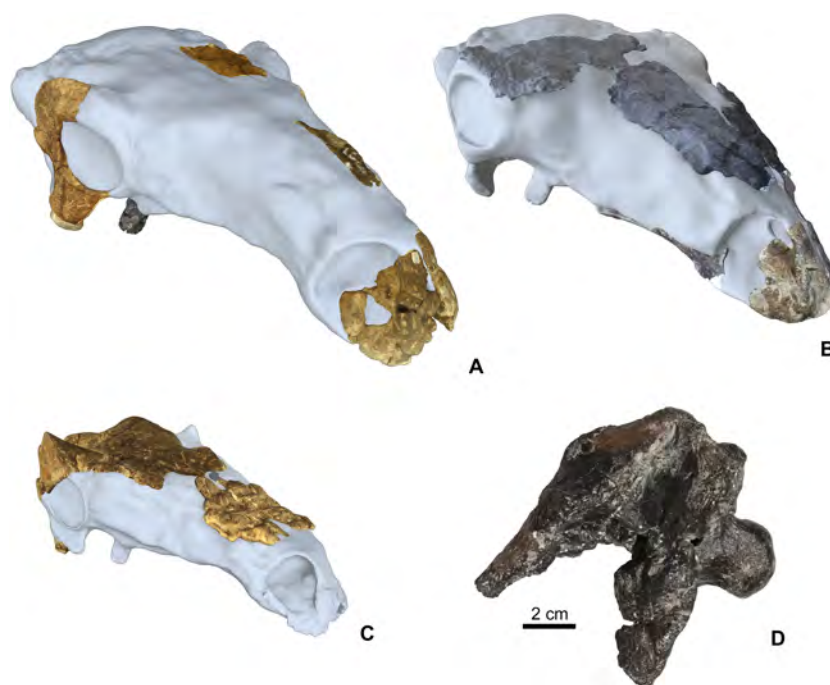


Figure 2 Cranial specimens of the Late Cretaceous (Santonian) nodosaurid ankylosaur, *Hungarosaurus tormai* in 3D reconstruction (for 3D reconstruction see Video S1–S6). (A) holotype skull (MTM 2007.26.1.-2007.26.34.). (B) MTM PAL 2020.31.1. (C) MTM PAL 2020.32.1. (D) basicranium and partial skull roof MTM PAL 2013.23.1. Scal bar is for Fig. 2D, other skulls are in comparative scale.

Full-size  DOI: [10.7717/peerj.11010/fig-2](https://doi.org/10.7717/peerj.11010/fig-2)

3 (version 3.08). The 3D reconstructions of the three studied skulls are in the video files (Video S1–S6; <https://zenodo.org/record/4117812#.X5FfUO28o2w>).

Specimens were not allowed to be cut for histological purposes, thus micro-computed tomography (microCT) imaging was used to investigate the cross-sectional structure of selected cranial elements and their ornamentation. MicroCT scanning of fossil and recent bones was conducted in the laboratory of the Carl Zeiss IMT Austria GmbH (Budaörs, Hungary), using a Zeiss Metrotom computer tomograph with interslice distances of 130 μm . CT scans of the 14 fossil and extant specimens used in this study is available at morphosource.org:

- MDE R 43 (<https://doi.org/10.17602/M2/M170133>);
- MDE R 20 (<https://doi.org/10.17602/M2/M170132>);
- MDE R 47 (<https://doi.org/10.17602/M2/M170147>);
- MDE R 45 (<https://doi.org/10.17602/M2/M170135>);
- MTM PAL 2003.12 (<https://doi.org/10.17602/M2/M170134>);
- MTM PAL 2007.27.1 (<https://doi.org/10.17602/M2/M170137>);
- MTM PAL 2007.28.1 (<https://doi.org/10.17602/M2/M170138>);
- MTM PAL 2010.1.1 (<https://doi.org/10.17602/M2/M170139>);
- MTM PAL 2020.31.1 (<https://doi.org/10.17602/M2/M170146>);
- MTM PAL 2020.31.1 (<https://doi.org/10.17602/M2/M170148>);

MTM PAL 2020.32.1 (<https://doi.org/10.17602/M2/M170142>);
MTM PAL 2020.32.1 (<https://doi.org/10.17602/M2/M170145>);
MTM PAL 2020.33.1 (<https://doi.org/10.17602/M2/M170143>);
MTM PAL 2020.34.1 (<https://doi.org/10.17602/M2/M170144>).

RESULTS

As revealed by microCT images of extant lizards, the presence of osteoderms across the skull is often associated with a thin radiolucent or unossified seam separating the overlying ornamentation from the underlying cranial element (e.g., [Figs. 1A](#) and [1C](#)). In contrast, among species that develop their ornamentation by the exaggerated outgrowth of individual elements (and not the coossification of osteoderms), this radiolucent seam is absent ([Figs. 1E](#) and [1G](#)). Although the superficial layer of bone is typically invested with many small openings and canals and that pass into the cancellous core ([Figs. 1C2](#) and [1D2](#)), the microCT data does not reveal an obvious boundary between cranial ornamentation and the underlying compact cortex.

Cranial ornamentation in *Hungarosaurus*

Premaxilla

Premaxillae are preserved in four specimens, including two isolated elements along with the holotype skull (MTM 2007.26.1.-2007.26.34.) and in MTM PAL 2020.31.1. ([Figs. 3A–3D](#)). The smallest premaxilla (MTM V.2003.12) is almost half the size of the holotype ([Fig. 3A](#)), and thus likely represents a juvenile or subadult individual ([Ősi & Makádi, 2009](#)). Premaxillae are unfused to each other in all specimens. Ornamentation can be observed on all the specimens including the smallest element, but does not overlap the sutures between the two premaxillae, or the borders with the nasals and maxillae. On the smallest specimen (MTM V.2003.12), the ornamentation is formed by various deep, relatively large pits and grooves present both anteriorly and laterally reaching the premaxilla-maxilla contact. In addition, various nutritive foramina are present further suggesting the still active growth of this bone. This ornamentation is thickest along the anterior margin. On the larger specimens, the surface of the ornamentation is very slightly irregular, pitting is less extensive and various shallow holes (diameter 2–3 mm) are present ([Figs. 3C](#) and [3D](#)). Ornamentation in the larger specimens is restricted to the anterolateral and ventrolateral margins of the premaxilla ([Fig. 3D](#)) and composed of irregularly shaped, 1–3 mm thick, flat bumps with branching morphology. Pits and grooves are less extensive but wider compared to those on the smaller premaxilla. MicroCT scanning of the three smallest premaxillae ([Figs. 3A–3C](#)) indicates that there is no evidence of a seam of separation between the superficial cranial ornamentation and the underlying cranial element, similarly to that seen in extant lizards ([Figs. 1C2](#) and [1D2](#)).

Nasal

Nasals ([Figs. 3E–3H](#)) are preserved for the skulls of MTM PAL 2020.31.1., MTM PAL 2020.32.1. and the holotype ([Ősi et al., 2019](#), [Figs. 3E, 3F, 3H](#), [Data S1](#) and [Video S1–S6](#)). There is also an isolated, complete right nasal (MTM PAL 2020.34.1., [Fig. 3G](#)).

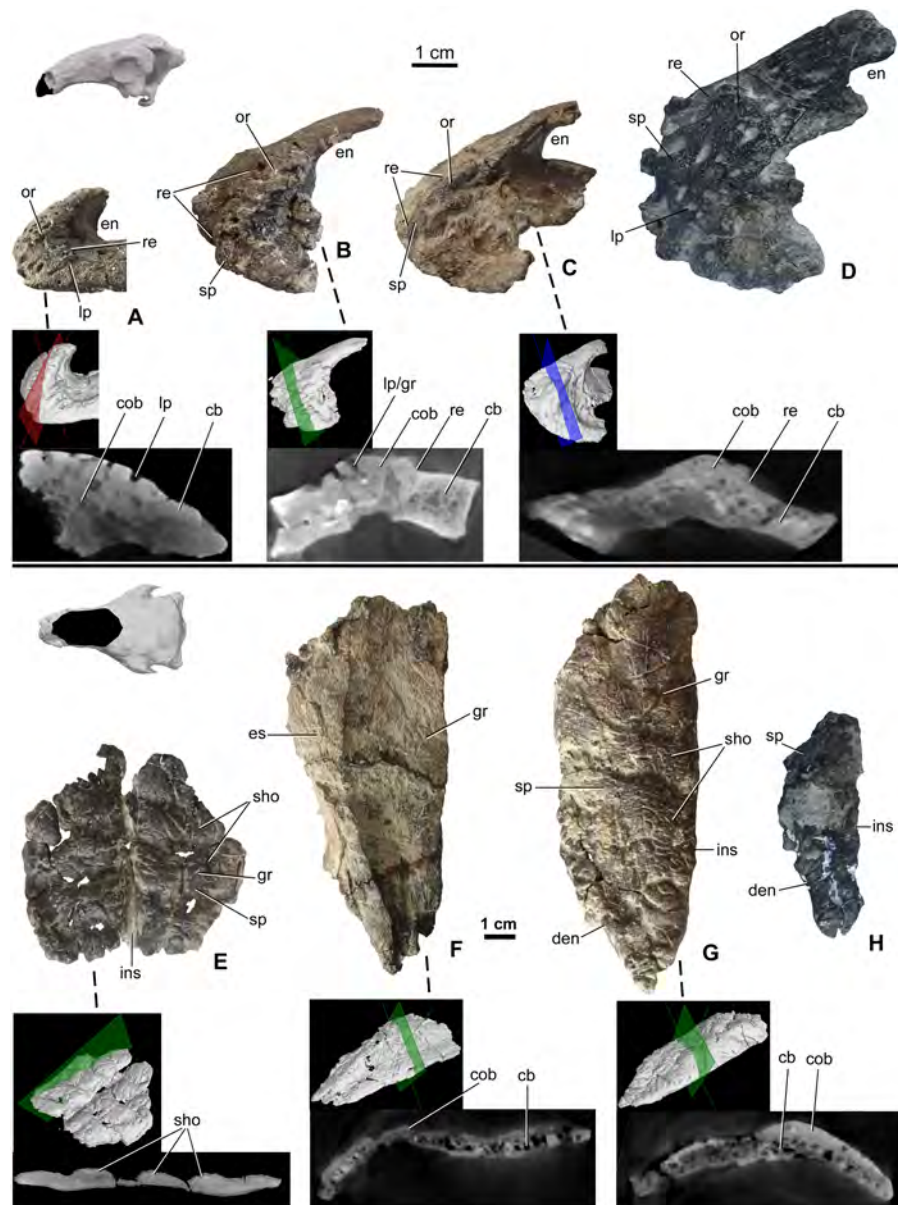


Figure 3 Ontogenetic change of the cranial ornamentation on the premaxillae (A–D) and nasals (E–H) of *Hungarosaurus*. Each element is visualized in surface view, three-dimensional surface rendering of microCT images, and microCT cross-sectional view. (A) Right premaxilla of MTM V 2003.12. (mirrored) in left lateral view. (B) left premaxilla of MTM PAL 2020.33.1. in left lateral view. (C) Premaxilla of MTM PAL 2020.31.1. in left lateral view. (D) Holotype premaxilla in left lateral view. (E) Nasals of MTM PAL 2020.32.1. in dorsal view. (F) right nasal from MTM PAL 2020.31.1. (G) Right nasal (MTM PAL 2020.34.1.) in dorsal view. (H) Holotype nasal fragment (mirrored). Abbreviations: cb, cancellous bone; cob, compact bone; den, dorsal margin of external nares; en, external nares; es, eroded surface; gr, groove; ins, internasal suture; lp, large pits; or, ornamentation; re, raised edge; sho, ornamentation in shingled arrangement; sp, small pits.

Full-size DOI: [10.7717/peerj.11010/fig-3](https://doi.org/10.7717/peerj.11010/fig-3)

Similar to the premaxillae, nasals are unfused, a feature that is characteristic of skeletally immature ankylosaurs (e.g., *Pinacosaurus*, ZPAL MgD-II, ([Maryńska, 1977](#)); the holotype skull of *Europelta*, ([Kirkland et al., 2013](#)) and *Kunbarrasaurus* ([Molnar, 1996](#); [Leahey et al., 2015](#)), but otherwise uncommon to ankylosaurs. Despite evidence of weathering, ornamentation is present along the dorsal surface of all the nasals ([Fig. 3F](#)). As revealed by MTM PAL 2020.32.1, the cranial ornamentation across the nasal consists of four or five transversely oriented and weakly shingled hummocky ridges ([Fig. 3E](#)). A comparable, hummocky-shingled ornamentation is also observed on the nasals of *Pawpawsaurus* ([Lee, 1996](#); [Paulina-Carabajal, Lee & Jacobs, 2016](#)). Although hummocky ornamentation is also preserved on the larger specimen (MTM PAL 2020.34.1., [Fig. 3G](#)), the shingled arrangement is less obvious. Cranial ornamentation across the nasal is further characterized by a network of small pits (diameter: 0.5–3 mm) and grooves (length: 5–20 mm). None of the ornamentation across the nasal reaches the premaxilla-nasal, internasal and maxilla-nasal sutural borders on any of the studied specimens. Along the maxillary and prefrontal sutural borders, the nasal becomes thinner and the ornamentation abruptly ends, resulting in an irregular, step-like raised edge towards the maxilla and prefrontal. The nasal connects to the frontal via a scarf joint and, unlike the other sutural contacts, the pattern of cranial ornamentation appears to overlap the nasal process of the frontal ([Data S1](#)).

MicroCT scans from the nasals of three different individuals (MTM PAL 2020.32.1., MTM PAL 2020.31.1., MTM PAL 2020.34.1.) revealed no indication that cranial ornamentation was separated from the nasal in any of the specimens. Instead, the nasal (including cranial ornamentation) reveals a diploë organization, with a thicker layer of compact bone along the external (dorsal) surface as compared with the cancellous internal (ventral) surface ([Figs. 3E–3G](#)).

Prefrontal-supraorbital-frontal complex

The skull roof between the orbits is partly preserved from a number of specimens ([Table 2](#)), including MTM PAL 2020.32.1., MTM 2007.27.1 (an isolated left frontal), and MTM PAL 2013.23.1 ([Figs. 4A–4C](#)). In all specimens, the cranial elements posterior to the nasals (i.e., the temporal region of [Vickaryous & Russell, 2003](#)) are completely fused and their sutural boundaries obliterated. Cranial ornamentation on MTM PAL 2020.32.1. ([Fig. 4A](#), [Fig. S2](#), [Data S1](#) and [Video S3–S6](#)) includes a number of large, deep pits (diameter: 2–4 mm) and relatively short, shallow grooves. These grooves appear to radiate from a near-central domed area, corresponding to the position of the parietals. Similar to the nasals, the surface of these elements is further ornamented by very small pits (diameter: 0.2–1 mm) and grooves (length: 1–5 mm). The isolated frontal ([Fig. 4B](#)) is ornamented by various small, deep pits (diameter: 1–3 mm) and grooves (width: 1–3 mm). Similar to the nasals, microCT scans of the frontals revealed diploë structure, with a thicker layer of compact bone along the external (dorsal) surface, and no radiolucent seam between cranial ornamentation and the element proper. Some pits pass through the compact bone into the deeper cancellous bone whereas some wider holes (diameter: 2–3 mm) and channels of the cancellous part enter and end into the upper compact bone.

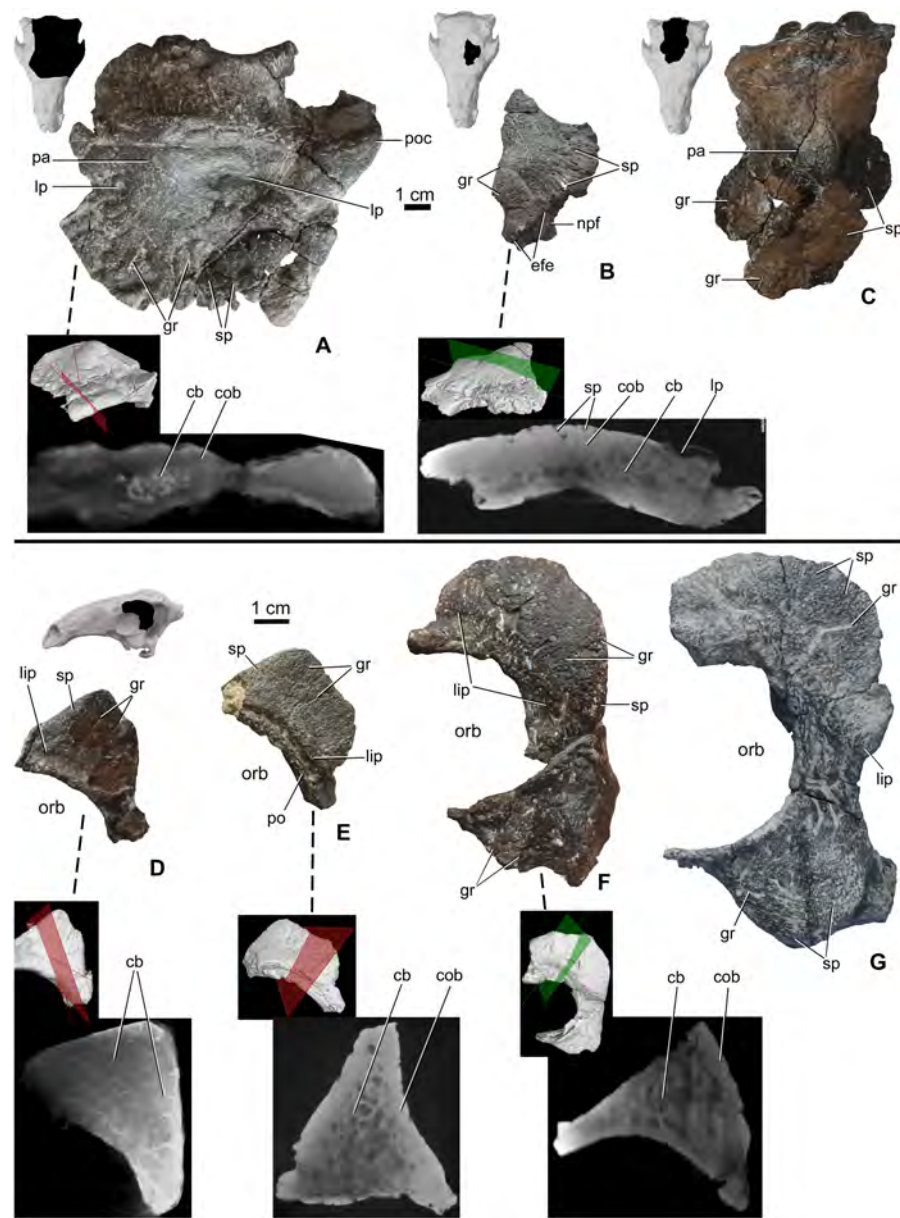


Figure 4 Ontogenetic change of the cranial ornamentation on the skull roof and orbital region of *Hungarosaurus*. Each element is visualized in surface view, three-dimensional surface rendering of microCT images, and microCT cross-sectional view. (A) Skull roof of MTM PAL 2020.32.1. in dorsal view. (B) MTM 2007.27.1. left fragmentary frontal in dorsal view. (C) MTM PAL 2013.23.1. basicranium and partial skull roof in dorsal view. (D) Postorbital of MTM PAL 2020.32.1. (E) MTM 2007.28.1. left postorbital. (F) MTM 2010.1.1. left postorbital and jugal. (G) Holotype postorbital and jugal (mirrored). Abbreviations: cb, cancellous bone; cob, compact bone; efe, edge of frontal elaboration; gr, groove; lip, depressed “lip” at transition to softer skin; lp, large pits; npf, nasal process of frontal; orb, orbit; pa, parietal; po, postorbital; poc, postorbital crest; sp, small pits.

Full-size  DOI: 10.7717/peerj.11010/fig-4

Postorbital-jugal

Portions of the postorbital and jugal are preserved that represent a number of different size classes (and presumably ontogenetic stages), including MTM PAL 2020.32.1. (Fig. 4D), two isolated specimens, MTM 2007.28.1. (Fig. 4E) and MTM 2010.1.1. (Fig. 4F), and the holotype (Fig. 4G, Data S1 and Video S1–S6). Characteristically, the long axis of the postorbital of *Hungarosaurus* passes along the posterodorsal margin of the orbit with a variably projecting crest-like caputegulum. In the smallest referred specimens (MTM PAL 2020.32.1., MTM 2007.28.1., Figs. 4D and 4E), this crest has a dorsoventral height/anterodorsal-posteroventral length ratio of 0.58, whereas in the larger specimens this ratio is reduced to 0.5–0.45 (MTM 2010.1.1., holotype, Figs. 4F and 4G). As a result, the crests in the larger specimens encircle more of the orbit, both dorsally and caudally (i.e., towards the jugal process). In addition, the crests of the smaller specimens are more rugose than the larger specimens, and are ornamented by a larger number of small, deeply opening pits and/or neurovascular canals. In contrast, these canals are largely absent from the largest specimen. As for the other cranial elements, microCT scans reveal no evidence of separation between the cranial ornamentation and the underlying elements (Figs. 4D–4F), with a similar pattern of compact bone surrounding a cancellous core.

The posteroventral margin of the orbit receives contributions from the jugal (and possibly the quadratojugal). In *Hungarosaurus*, the jugal is preserved in the holotype and by an isolated element (MTM 2010.1.1., Figs. 4F and 4G). The isolated specimen includes a relatively small quadratojugal boss with a short, ventrally pointed process, whereas that of the holotype is more rounded. As revealed by microCT scans, quadratojugal bosses are not separate elements from the quadratojugal. In all specimens, the surfaces are ornamented with rugose bone, including short neurovascular grooves (1–8 mm long) and small pits (0.3–1 mm). Similar to the postorbital crests, the smaller specimens are more heavily ornamented than the larger specimens. MicroCT scans of the jugal ornamentation (not figured) reveal a similar cross-sectional structure to the other skull elements, viz. a compact cortex surrounding a cancellous core.

Parietal

The area of the skull roof corresponding with the parietal is preserved in MTM PAL 2020.32.1. (Fig. 4A, Data S1 and Video S1–S6) and MTM PAL 2013.23.1. (Fig. 4C). This area forms a domed or vaulted complex, and most of its dorsal surface is relatively smooth or ornamented by shallow, short grooves and small pits (0.5–1 mm) on both specimens. On MTM PAL 2020.32.1., comparatively deep and wide grooves (> 5 mm) and large pits appear to roughly correspond with the positions of contact with the frontal, supraorbital and postorbital bones. MTM PAL 2013.23.1. (Fig. 4C) is at least 1.5 times larger than MTM PAL 2020.32.1., and thus most probably representing different ontogenetic stages. Based on microCT imaging (Fig. 4A), there is no evidence that osteoderms contribute to the development of cranial ornamentation on this element.

DISCUSSION

Cranial ornamentation is a hallmark feature of ankylosaurs (*Coombs Jr, 1978; Vickaryous, Maryańska & Weishampel, 2004*), and an emerging source of phylogenetic information (e.g., *Arbour & Currie, 2013; Arbour & Currie, 2016*). Although the skeletally mature pattern of cranial ornamentation may take the form of a series of variably shaped and sized polygons (referred to as caputegulae; *Blows, 2001*; see also *Arbour & Currie, 2013*), in some species these discrete features are not present. Regardless of the pattern formed, cranial ornamentation appears to form as a result of two potentially congruent processes: the coossification of overlying osteoderms with the skull, and the exaggerated outgrowth of individual cranial elements (*Vickaryous, Russell & Currie, 2001; Hill, Witmer & Norell, 2003*). The cranial material described here provides a rare opportunity to investigate the contribution of each of these processes in a European nodosaurid.

Using size as a proxy for age, we interpret the described specimens as representing a partial ontogenetic series of *Hungarosaurus* (Figs. 2, 3 and 4). The smallest specimen (MTM V.2003.12; estimated total skull length ~15–17 cm) is approximately half the size of the largest (the holotype and MTM PAL 2013.23.1; estimated total skull length ~34–36 cm). A fourth skull (MTM PAL 2020.32.1.; estimated total skull length ~25 cm), is intermediate in size. Our findings reveal that cranial ornamentation, in the form of rugose texturing across the premaxilla and nasal, as well a sharp crest-like ridge along the postorbital, is already present in the smallest (= ontogenetically youngest) individuals examined. Although the pattern of cranial ornamentation changes as the individual gets larger, we found no evidence for the fusion or coossification of osteoderms with the underlying skull.

In *Hungarosaurus*, the smallest (= ontogenetically youngest) specimens have a more well-defined pattern of cranial ornamentation compared to larger (and presumably older) specimens. For example, the premaxilla of the smallest specimen has a more deeply pitted rugosity profile when compared to the larger specimens. Similarly, the pattern of small pits and grooves across the prefrontal-supraorbital-frontal complex and the parietal is more obvious on the smallest specimen. And while the nasal bone also demonstrates a well-developed pattern of transversely oriented pattern of hummocky rugosity, in smaller specimens these features form an anteriorly imbricated or shingle-like arrangement. In larger individuals the hummocky rugosity pattern is retained, albeit with a reduced (i.e., more shallow) profile. Whether this reflects an alternation in growth and maintenance of cranial ornamentation or the overlying keratinous skin structures, or evidence of sexual dimorphism or other form of signaling or identifier, remains unclear.

One of the most characteristic features of *Hungarosaurus* is the formation of a well-defined crest-like caputegulum on the postorbital. This structure is present in the smallest specimens (MTM PAL 2020.32.1., MTM 2007.28.1, Figs. 4D–4G), suggesting that it develops relative early during ontogeny, similar to the supraorbital horns of ceratopsians (*Horner & Goodwin, 2006*). MicroCT images reveal no evidence that this crest is formed by the coossification of an osteoderm with the postorbital. As for other features of cranial ornamentation, the morphology of the postorbital crest changes during ontogeny. In the smallest specimens, the shape of the postorbital crest is more acute compared with larger

(and presumably ontogenetically older) individuals. Near the margin of the orbit, the postorbital demonstrates a pronounced basal sulcus or 'lip' (sensu *Hieronimus et al.*, 2009, Figs. 4D–4G). Although this feature was previously characterized as a fused osteoderm (*Ósi et al.*, 2012), it is reinterpreted here, according to *Hieronimus et al.* (2009), as evidence for a cornified sheath. A similar, well demarcated basal sulcus on the postorbital has also been reported for *Euoplocephalus* (*Vickaryous, Russell & Currie*, 2001).

Osteoderms do not contribute to the cranial ornamentation across the skull of *Hungarosaurus*. Our microCT data does not reveal any evidence that the cranial elements received a separate superficial contribution of bone, and there are no signs of osteoderms superimposed across sutural boundaries. Consequently, we predict that cranial ornamentation in *Hungarosaurus*, similar to the basal ankylosaur *Cedarpetta*, is the result of elaborated (exaggerated or exostotic) outgrowth of individual cranial elements. This elaborated/outgrowth form of cranial ornamentation has also been reported for non-eurypodan thyreophorans such as *Scelidosaurus* and *Emausaurus* (*Norman*, 2020), as well as many extant lizard species (e.g., *Etheridge & De Queiroz*, 1988; *Powell et al.*, 2017).

Similar to other ankylosaurs (e.g., *Arbour & Currie*, 2013), the pattern of cranial ornamentation varies between specimens of *Hungarosaurus*. Although this variation is primarily interpreted as ontogenetic, the potential role of sexual dimorphism, individual differences, and taphonomic processes (e.g., deformation, weathering) cannot be excluded. Sexually dimorphic differences in cranial ornamentation has been suggested for a number of fossil archosaurs, including pterosaurs (*Bennett*, 1992; *Bennett*, 2001; *Naish & Martill*, 2003), ceratopsian dinosaurs (*Lehman*, 1990; *Sampson, Ryan & Tanke*, 1997; *Knell & Sampson*, 2011; *Borkovic*, 2013; *Hone & Naish*, 2013) and the ankylosaurid *Pinacosaurus* (*Godefroit et al.*, 1999). With rare exceptions however, the limited number of specimens and/or incomplete preservation of skull material makes the identification of sex-related differences challenging (but see *Bennett*, 1992). Among the elements described herein, we did observe differences in size and shape. Although none of this variation cannot be separated from changes as a result of ontogeny, their potential use as dimorphic signals cannot be ruled out. For example, the postorbital crest of the holotype and MTM V 2010.1.1. encircles more of the orbit (dorsally and caudally), than those of MTM PAL 2020.32.1. and MTM 2007.28.1. (Figs. 4D–4G). Though the latter specimens are from smaller individuals, it remains possible that some of the morphological differences may also be related to dimorphism. Evidence from both fossil and extant species have made it clear that cranial ornamentation is often variable, and that the exclusive use of these features for taxonomic characterization should be viewed with caution (*Godefroit et al.*, 1999; *Martill & Naish*, 2006). Future work on the cranial ornamentation of recent forms may bring us closer to the understanding of the cranial ornamentation of fossil taxa as well.

CONCLUSIONS

The Santonian nodosaurid *Hungarosaurus* is represented by multiple individuals, including a partial ontogenetic series. Unlike some Late Cretaceous ankylosaurids, osseous

ornamentation in *Hungarosaurus* is restricted to individual elements, and does not appear to include the incorporation of osteoderms. In *Hungarosaurus*, cranial ornamentation was already well-formed in the smallest (= youngest) individuals. Although ontogeny appears to be a key source of variation, the contribution of individual differences, sexual dimorphism and even taphonomic processes cannot be ruled out.

Institutional abbreviations

IGM	Institute of Geology, Ulaan Baatar, Mongolia
MDE	Collection of the Hungarian Dinosaur Expedition, Budapest, Hungary
MTM	Hungarian Natural History Museum, Budapest, Hungary
TMP	Royal Tyrrell Museum, Drumheller, Canada

ACKNOWLEDGEMENTS

We thank the reviewers Lucy Leahey, James Kirkland and Jelle Wiersma to their constructive comments that highly improved the manuscript. We are grateful to Doug Boyer for his generous help in depositing the CT data in Morphosource. We thank the 2000–2019 field crew for their assistance in the Iharkút fieldwork.

ADDITIONAL INFORMATION AND DECLARATIONS

Funding

This work was supported by the MTA-ELTE Lendület Dinosaur Research Group (No. 95102), National Research, Development and Innovation Office, Hungary (No. 116665, 131597), and the National Geographic Society (No. 7228-02, 7508-03). The funders had no role in study design, data collection and analysis, decision to publish, or preparation of the manuscript.

Grant Disclosures

The following grant information was disclosed by the authors:

MTA-ELTE Lendület Dinosaur Research Group: 95102.

National Research, Development and Innovation Office, Hungary: 116665, 131597.

National Geographic Society: 7228-02, 7508-03.

Competing Interests

The authors declare there are no competing interests.

Author Contributions

- Attila Ósi conceived and designed the experiments, performed the experiments, analyzed the data, prepared figures and/or tables, authored or reviewed drafts of the paper, and approved the final draft.
- János Magyar conceived and designed the experiments, performed the experiments, prepared figures and/or tables, authored or reviewed drafts of the paper, and approved the final draft.

- Károly Rosta conceived and designed the experiments, performed the experiments, prepared figures and/or tables, and approved the final draft.
- Matthew Vickaryous performed the experiments, analyzed the data, authored or reviewed drafts of the paper, and approved the final draft.

Data Availability

The following information was supplied regarding data availability:

The osteological description of two skulls of *Hungarosaurus tormai* is available as a Supplemental File.

Six video files are available at Zenodo:

Ósi, Attila, Magyar, János, Rosta, Károly, & Vickaryous, Matthew. (2021). Supplementary video files for the Ósi et al. paper. Zenodo. <http://doi.org/10.5281/zenodo.4117812>.

CT scans of the 14 fossil and extant specimens used in this study are available at Morphosource:

MDE R 43 (DOI: [10.17602/M2/M170133](https://doi.org/10.17602/M2/M170133));

MDE R 20 (DOI: [10.17602/M2/M170132](https://doi.org/10.17602/M2/M170132));

MDE R 47 (DOI: [10.17602/M2/M170147](https://doi.org/10.17602/M2/M170147));

MDE R 45 (DOI: [10.17602/M2/M170135](https://doi.org/10.17602/M2/M170135));

MTM PAL 2003.12 (DOI: [10.17602/M2/M170134](https://doi.org/10.17602/M2/M170134));

MTM PAL 2007.27.1 (DOI: [10.17602/M2/M170137](https://doi.org/10.17602/M2/M170137));

MTM PAL 2007.28.1 (DOI: [10.17602/M2/M170138](https://doi.org/10.17602/M2/M170138));

MTM PAL 2010.1.1 (DOI: [10.17602/M2/M170139](https://doi.org/10.17602/M2/M170139));

MTM PAL 2020.31.1 (DOI: [10.17602/M2/M170146](https://doi.org/10.17602/M2/M170146));

MTM PAL 2020.31.1 (DOI: [10.17602/M2/M170148](https://doi.org/10.17602/M2/M170148));

MTM PAL 2020.32.1 (DOI: [10.17602/M2/M170142](https://doi.org/10.17602/M2/M170142));

MTM PAL 2020.32.1 (DOI: [10.17602/M2/M170145](https://doi.org/10.17602/M2/M170145));

MTM PAL 2020.33.1 (DOI: [10.17602/M2/M170143](https://doi.org/10.17602/M2/M170143));

MTM PAL 2020.34.1 (DOI: [10.17602/M2/M170144](https://doi.org/10.17602/M2/M170144)).

Supplemental Information

Supplemental information for this article can be found online at <http://dx.doi.org/10.7717/peerj.11010#supplemental-information>.

REFERENCES

- Alexander GD, Houston DC, Campbell M. 1994.** A possible acoustic function for the casque structure in hornbills (Aves: Bucerotidae). *Journal of Zoology* **233**(1):57–67 DOI [10.1111/j.1469-7998.1994.tb05262.x](https://doi.org/10.1111/j.1469-7998.1994.tb05262.x).
- Anderson RA, Vitt LJ. 1990.** Sexual selection versus alternative causes of sexual dimorphism in teiid lizards. *Oecologia* **84**(2):145–157.
- Arbour VM, Currie PJ. 2013.** Euoplocephalus *tutus* and the diversity of ankylosaurid dinosaurs in the Late Cretaceous of Alberta, Canada, and Montana, USA. *PLOS ONE* **8**(5):e62421 DOI [10.1371/journal.pone.0062421](https://doi.org/10.1371/journal.pone.0062421).

- Arbour VM, Currie PJ. 2016.** Systematics, phylogeny and palaeobiogeography of the ankylosaurid dinosaurs. *Journal of Systematic Palaeontology* **14**(5):385–444 DOI [10.1080/14772019.2015.1059985](https://doi.org/10.1080/14772019.2015.1059985).
- Bartels WS. 1984.** Osteology and systematic affinities of the horned alligator *Ceratosuchus* (Reptilia, Crocodylia). *Journal of Paleontology* **58**:1347–1353.
- Bennett SC. 1992.** Sexual dimorphism of *Pteranodon* and other pterosaurs, with comments on cranial crests. *Journal of Vertebrate Paleontology* **12**(4):422–434 DOI [10.1080/02724634.1992.10011472](https://doi.org/10.1080/02724634.1992.10011472).
- Bennett SC. 2001.** The osteology and functional morphology of the Late Cretaceous pterosaur *Pteranodon* Part II. Size and functional morphology. *Palaeontographica Abteilung A* **260**:113–153.
- Bhullar BS. 2011.** The power and utility of morphological characters in systematics: a fully resolved phylogeny of *Xenosaurus* and its fossil relatives (Squamata: Anguimorpha). *Bulletin of the Museum of Comparative Zoology* **160**(3):65–181 DOI [10.3099/0027-4100-160.3.65](https://doi.org/10.3099/0027-4100-160.3.65).
- Bickelmann C, Klein N. 2009.** The late Pleistocene horned crocodile *Voay robustus* (Grandidier & Vaillant, 1872) from Madagascar in the Museum für Naturkunde Berlin. *Fossil Record* **12**(1):13–21 DOI [10.1002/mmng.200800007](https://doi.org/10.1002/mmng.200800007).
- Blows WT. 2001.** Dermal armor of the polacanthine dinosaurs. In: Carpenter K, ed. *The Armored Dinosaurs*. Bloomington: Indiana University Press, 363–385.
- Borkovic B. 2013.** Investigating sexual dimorphism in Ceratopsid Horncores. Unpublished Master's thesis, University of Calgary, Calgary, Canada, 203.
- Botfalvai G, Haas J, Bodor ER, Mindszenty A, Ósi A. 2016.** Facies architecture and palaeoenvironmental implications of the Upper Cretaceous (Santonian) Csehbánya formation at the Iharkút vertebrate locality (Bakony Mountains, Northwestern Hungary). *Palaeogeography, Palaeoclimatology, Palaeoecology* **441**:659–678 DOI [10.1016/j.palaeo.2015.10.018](https://doi.org/10.1016/j.palaeo.2015.10.018).
- Botfalvai G, Ósi A, Mindszenty A. 2015.** Taphonomic and paleoecologic investigations of the Late Cretaceous (Santonian) Iharkút vertebrate assemblage (Bakony Mts, north-western Hungary). *Palaeogeography, Palaeoclimatology, Palaeoecology* **417**:379–405 DOI [10.1016/j.palaeo.2014.09.032](https://doi.org/10.1016/j.palaeo.2014.09.032).
- Botfalvai G, Prondvai E, Ósi A. 2020.** Living alone or moving in herds? A holistic approach highlights complexity in the social lifestyle of Cretaceous ankylosaurs. *Cretaceous Research* **118**:104633 DOI [10.1016/j.cretres.2020.104633](https://doi.org/10.1016/j.cretres.2020.104633).
- Brochu CA. 2006.** A new miniature horned crocodile from the Quaternary of Aldabra Atoll, western Indian Ocean. *Copeia* **2006**(2):149–158 DOI [10.1643/0045-8511\(2006\)6\[149:ANMHCF\]2.0.CO;2](https://doi.org/10.1643/0045-8511(2006)6[149:ANMHCF]2.0.CO;2).
- Brochu CA. 2007.** Morphology, relationships, and biogeographical significance of an extinct horned crocodile (Crocodylia, Crocodylidae) from the Quaternary of Madagascar. *Zoological Journal of the Linnean Society* **150**(4):835–863 DOI [10.1111/j.1096-3642.2007.00315.x](https://doi.org/10.1111/j.1096-3642.2007.00315.x).

- Brochu CA, Njau J, Blumenschine RJ, Densmore LD. 2010.** A new horned crocodile from the Plio-Pleistocene hominid sites at Olduvai Gorge, Tanzania. *PLOS ONE* 5(2):e9333 DOI [10.1371/journal.pone.0009333](https://doi.org/10.1371/journal.pone.0009333).
- Broeckhoven C, DeKock C, Hui C. 2018.** Sexual dimorphism in the dermal armour of cordyline lizards (Squamata: Cordylinae). *Biological Journal of the Linnean Society* 125(1):30–36 DOI [10.1093/biolinnean/bly096](https://doi.org/10.1093/biolinnean/bly096).
- Broeckhoven C, De Kock C, Mouton PLFN. 2017.** Sexual dimorphism in osteoderm expression and the role of male intrasexual aggression. *Biological Journal of the Linnean Society* 122(2):329–339 DOI [10.1093/biolinnean/blx066](https://doi.org/10.1093/biolinnean/blx066).
- Broeckhoven C, Du Plessis A, Hui C. 2017.** Functional trade-off between strength and thermal capacity of dermal armor: insights from girdled lizards. *Journal of the Mechanical Behavior of Biomedical Materials* 74:189–194 DOI [10.1016/j.jmbbm.2017.06.007](https://doi.org/10.1016/j.jmbbm.2017.06.007).
- Buchholz R. 1991.** Older males have bigger knobs: correlates of ornamentation in two species of curassow. *Auk* 198:153–160 DOI [10.1093/auk/108.1.153](https://doi.org/10.1093/auk/108.1.153).
- Carpenter K, Kirkland JI, Burge D, Bird J. 2001.** Disarticulated skull of a new primitive ankylosaurid from the lower cretaceous of Eastern Utah. In: Carpenter K, ed. *The Armored Dinosaurs*. Bloomington: Indiana University Press, 318–340.
- Čerňanský A, Hutchinson MN. 2013.** A new large fossil species of Tiliqua (Squamata; Scincidae) from the Pliocene of the Wellington Caves (New South Wales, Australia). *Alcheringa: An Australasian Journal of Palaeontology* 37(1):131–136 DOI [10.1080/03115518.2012.715326](https://doi.org/10.1080/03115518.2012.715326).
- Čerňanský A, Syromyatnikova EV. 2019.** The first Miocene fossils of *Lacerta* cf. *trilineata* (Squamata, Lacertidae) with a comparative study of the main cranial osteological differences in green lizards and their relatives. *PLOS ONE* 14(8):e0216191 DOI [10.1371/journal.pone.0216191](https://doi.org/10.1371/journal.pone.0216191).
- Clarac F, De Buffrenil V, Brochu C, Cubo J. 2017.** The evolution of bone ornamentation in Pseudosuchia: morphological constraints versus ecological adaptation. *Biological Journal of the Linnean Society* 121:395–408 DOI [10.1093/biolinnean/blw034](https://doi.org/10.1093/biolinnean/blw034).
- Coombs Jr WP. 1971.** The Ankylosauria. PhD dissertation, Columbia University, New York, 487.
- Coombs Jr WP. 1978.** The families of the ornithischian dinosaur Order Ankylosauria. *Palaeontology* 21:143–170.
- De Buffrenil V. 1982.** Morphogenesis of bone ornamentation in extant and extinct crocodylians. *Zoomorphology* 99(2):155–166 DOI [10.1007/BF00310307](https://doi.org/10.1007/BF00310307).
- Doughty P, Shine R. 1995.** Life in two dimensions: natural history of the southern leaf-tailed gecko, *Phyllurus platurus*. *Herpetologica* 51:193–201.
- Eastick DL, Tattersall GJ, Watson SJ, Lesku JA, Robert KA. 2019.** Cassowary casques act as thermal windows. *Scientific Reports* 9(1):1–7 DOI [10.1038/s41598-019-38780-8](https://doi.org/10.1038/s41598-019-38780-8).
- Eckhardt FS, Gehring PS, Bartel L, Bellmann J, Beuker J, Hahne J, Korte V, Knittel M, Mensch D, Nagel M, Vences C, Rostosky V, Vierath V, Wilms J, Zenk Pohl M. 2012.** Assessing sexual dimorphism in a species of Malagasy chameleon (*Calumma*

- boettgeri*) with a newly defined set of morphometric and meristic measurements. *Herpetology Notes* 5:335–344.
- Eibl-Eibesfeldt I. 1966.** The fighting behaviour of marine iguanas. *Philosophical Transactions of the Royal Society B: Biological Sciences* 251:475–476.
- Etheridge R, De Queiroz K. 1988.** A phylogeny of Iguanidae. In: Estes R, Pergil G, eds. *Phylogenetic relationships of the lizard families*. Stanford: Stanford University Press, Essays Commemorating Charles L. Camp, 283–367.
- Evans RM, Knopf FL. 1993.** American white pelican (*Pelecanus erythrorhynchos*). In: Poole A, Gill F, eds. *The birds of North America*. 57. Washington: American Ornithologists Union.
- Flemming A, Bates M, Broeckhoven C. 2018.** The relationship between generation gland morphology and armour in Dragon Lizards (*Smaug*): a reassessment of ancestral states for the Cordylidae. *Amphibia-Reptilia* 39(4):457–470 DOI 10.1163/15685381-20181032.
- Fraga RM, Kreft S. 2007.** Natural history and breeding behavior of the olive (*Psarocolius yuracares*) and yellow-billed (*P. angustifrons alfredi*) oropendolas in Chapare Province, Bolivia. *Ornitología Neotropical* 18:251–261.
- Gadow H. 1901.** Amphibia and reptiles. In: *The Cambridge natural history*. London: Macmillan, 13(668), 181.
- Gaffney ES. 1979.** Comparative cranial morphology of recent and fossil turtles. In: *Bulletin of the American Museum of Natural History*. 164. 65–376.
- Gamble KC. 2007.** Internal anatomy of the hornbill casque described by radiography, contrast radiography, and computed tomography. *Journal of Avian Medicine and Surgery* 21(1):38–49 DOI 10.1647/1082-6742(2007)21[38:IAOTHC]2.0.CO;2.
- Garbin RC, Caramaschi U. 2015.** Is the matamata only one species? Morphological variation and color polymorphism in the South American turtle *Chelus fimbriatus* (Schneider, 1783) (Pleurodira: Chelidae). *PeerJ PrePrints* 3:e1072 DOI 10.7287/peerj.preprints.870v1.
- Godefroit P, Pereda-Suberbiola X, Li H, Dong ZM. 1999.** A new species of the ankylosaurid dinosaur *Pinacosaurus* from the Late Cretaceous of Inner Mongolia (PR China). *Bulletin de l'Institut Royal des Sciences Naturelles de Belgique, Sciences de la Terre* 69(Suppl B):17–36.
- González-García F. 1995.** Reproductive biology and vocalizations of the Horned Guan *Oreophasis derbianus* in Mexico. *The Condor* 97(2):415–426.
- Green T, Gignac P. 2019.** Ontogeny of southern cassowary, maleo, and helmeted guinea fowl casques: implications for the study of bony patterning in non-avian dinosaur cranial ornaments. *The FASEB Journal* 33(1_supplement):452–13.
- Hieronymus TL, Witmer LM, Tanke DH, Currie PJ. 2009.** The facial integument of centrosaurine ceratopsids: morphological and histological correlates of novel skin structures. *Anatomical Record* 292(9):1370–1396 DOI 10.1002/ar.20985.
- Hill RV, Witmer LW, Norell MA. 2003.** A new specimen of *Pinacosaurus grangeri* (Dinosauria: Ornithischia) from the Late Cretaceous of Mongolia: ontogeny and

- phylogeny of ankylosaurs. *American Museum Novitates* **3395**:1–29
[DOI 10.1206/00030082\(2003\)395;0001:ANSOPG;2.0.CO;2](https://doi.org/10.1206/00030082(2003)395;0001:ANSOPG;2.0.CO;2).
- Hone DWE, Naish D. 2013.** The ‘species recognition hypothesis’ does not explain the presence and evolution of exaggerated structures in non-avian dinosaurs. *Journal of Zoology* **290**(3):172–180 [DOI 10.1111/jzo.12035](https://doi.org/10.1111/jzo.12035).
- Horner JR, Goodwin MB. 2006.** Major cranial changes during *Triceratops* ontogeny. *Proceedings of the Royal Society B: Biological Sciences* **273**(1602):2757–2761
[DOI 10.1098/rspb.2006.3643](https://doi.org/10.1098/rspb.2006.3643).
- Horrocks N, Perrins C, Charmantier A. 2009.** Seasonal changes in male and female bill knob size in the mute swan *Cygnus olor*. *Journal of Avian Biology* **40**(5):511–519
[DOI 10.1111/j.1600-048X.2008.04515.x](https://doi.org/10.1111/j.1600-048X.2008.04515.x).
- Jacobs LL, Winkler DA, Murry PA, Maurice JM. 1994.** A nodosaurid scuteling from the Texas shore of the Western Interior Seaway. In: Carpenter K, Hirsch KF, Horner JR, eds. *Dinosaur eggs and babies*. 337–346.
- Jones IL. 1993.** Sexual differences in bill shape and external measurements of Crested Auklets. *The Wilson Bulletin* **105**(3):525–529.
- Jouventin P, Viot CR. 1985.** Morphological and genetic variability of Snow Petrels *Pagodroma nivea*. *Ibis* **127**(4):430–441 [DOI 10.1111/j.1474-919X.1985.tb04839.x](https://doi.org/10.1111/j.1474-919X.1985.tb04839.x).
- Kemp AC. 2001.** Family Bucerotidae (Hornbills). In: Del Hoyo J, Elliott A, Sargatal J, eds. *Handbook of the birds of the world. Mousebirds to Hornbills*, vol 6. Barcelona: Lynx Edicions, 436–523.
- Kinney B, Carpenter K, Shaw A. 2016.** Redescription of *Gastonia burgei* (Dinosauria: Ankylosauria, Polacanthidae), and description of a new species. *Neues Jahrbuch für Geologie und Paläontologie-Abhandlungen* **282**(1):37–80.
- Kirby A, Vickaryous M, Boyde A, Olivo A, Moazen M, Bertazzo S, Evans S. 2020.** A comparative histological study of the osteoderms in the lizards *Heloderma suspectum* (Squamata: Helodermatidae) and *Varanus komodoensis* (Squamata: Varanidae). *Journal of Anatomy* **236**(6):1035–1043 [DOI 10.1111/joa.13156](https://doi.org/10.1111/joa.13156).
- Kirkland JI, Alcalá L, Loewen MA, Espilez E, Mampel L, Wiersma J. 2013.** The basal nodosaurid ankylosaur *Europelta carbonensis* n. gen. n. sp. from the Lower Cretaceous (Lower Albian) Escucha Formation of Northeastern Spain. *PLOS ONE* **8**(12):e80405
[DOI 10.1371/journal.pone.0080405](https://doi.org/10.1371/journal.pone.0080405).
- Klembara J, Dobiašová K, Hain M, Yaryhin O. 2017.** Skull anatomy and ontogeny of legless lizard *Pseudopus apodus* (Pallas, 1775): heterochronic influences on form. *The Anatomical Record* **300**(3):460–502 [DOI 10.1002/ar.23532](https://doi.org/10.1002/ar.23532).
- Knell RJ, Sampson SD. 2011.** Bizarre structures in dinosaurs. *Journal of Zoology* **283**:18–22 [DOI 10.1111/j.1469-7998.2010.00758.x](https://doi.org/10.1111/j.1469-7998.2010.00758.x).
- Kopij G. 1998.** Behavioural patterns in the Southern Bald Ibis (*Geronticus calvus*) at breeding sites. *Vogelwarte* **39**:248–263.
- Lang M. 1989.** *Phylogenetic and biogeographic patterns of basiliscine iguanians*. *Bonner zoologische monographien*. Nr. 28. Herausgeber: Zoologisches Forschungsinstitut und Museum Alexander Koenig, 172.

- Laver RJ, Morales CH, Heinicke MP, Gamble T, Longoria K, Bauer AM, Daza JD. 2020.** The development of cephalic armor in the tokay gecko (Squamata: Gekkonidae: *Gekko gecko*). *Journal of Morphology* **281**(2):213–228 DOI [10.1002/jmor.21092](https://doi.org/10.1002/jmor.21092).
- Leahey LG, Molnar RE, Carpenter K, Witmer LM, Salisbury SW. 2015.** Cranial osteology of the ankylosaurian dinosaur formerly known as *Minmi* sp. (Ornithischia: Thyreophora) from the Lower Cretaceous Allaru Mudstone of Richmond, Queensland, Australia. *PeerJ* **3**:e1475 DOI [10.7717/peerj.1475](https://doi.org/10.7717/peerj.1475).
- Ledesma DT, Scarpetta SG. 2018.** The skull of the gerrhonotine lizard *Elgaria panamintina* (Squamata: Anguinae). *PLOS ONE* **13**(6):e0199584 DOI [10.1371/journal.pone.0199584](https://doi.org/10.1371/journal.pone.0199584).
- Lee YN. 1996.** A new nodosaurid ankylosaur (Dinosauria: Ornithischia) from the Paw Paw Formation (late Albian) of Texas. *Journal of Vertebrate Paleontology* **16**(2):232–245 DOI [10.1080/02724634.1996.10011311](https://doi.org/10.1080/02724634.1996.10011311).
- Lehman TM. 1990.** The ceratopsian subfamily Chasmosaurinae: sexual dimorphism and systematics. In: Currie PJ, Carpenter k, eds. *Dinosaur systematics symposium*. 211–229.
- Levrat-Calviac V, Zylberberg L. 1986.** The structure of the osteoderms in the gekko: *Tarentola mauritanica*. *American Journal of Anatomy* **176**(4):437–446 DOI [10.1002/aja.1001760406](https://doi.org/10.1002/aja.1001760406).
- Lindén H, Väisänen RA. 1986.** Growth and sexual dimorphism in the skull of the Capercaillie *Tetrao urogallus*: a multivariate study of geographical variation. *Ornis Scandinavica* **17**(2):85–98.
- Lowe PR. 1916.** Studies on the Charadriiformes. IV. An additional note on the Sheath-bills: some points in the osteology of the skull of an embryo of *Chionarchus* “minor” from Kerguelen.—V. Some notes on the Crab-Plover (*Dromas ardeola* Paykull). *Ibis* **58**:313–337.
- Lüps P. 1990.** Wozu besitzen Höckerschwäne *Cygnus olor*. Höcker? *Der Ornithologische Beobachter* **87**:1–11.
- Maisano JA, Bell CJ, Gauthier JA, Rowe T. 2002.** The osteoderms and palpebral in *Lanthanotus borneensis* (Squamata: Anguimorpha). *Journal of Herpetology* **36**(4):678–682.
- Maisano JA, Laduc TJ, Bell CJ, Barber D. 2019.** The cephalic osteoderms of *Varanus komodoensis* as revealed by high-resolution X-ray computed tomography. *The Anatomical Record* **302**(10):1675–1680 DOI [10.1002/ar.24197](https://doi.org/10.1002/ar.24197).
- Martill DM, Naish D. 2006.** Cranial crest development in the azhdarchoid pterosaur *Tupuxuara*, with a review of the genus and tapejarid monophyly. *Palaeontology* **49**(4):925–941 DOI [10.1111/j.1475-4983.2006.00575.x](https://doi.org/10.1111/j.1475-4983.2006.00575.x).
- Maryańska T. 1977.** Ankylosauridae (Dinosauria) from Mongolia. *Palaeontologia Polonica* **37**:85–151.
- Mayr G. 2018.** A survey of casques, frontal humps, and other extravagant bony cranial protuberances in birds. *Zoomorphology* **137**(3):457–472 DOI [10.1007/s00435-018-0410-2](https://doi.org/10.1007/s00435-018-0410-2).

- Mead JI, Schubert BW, Wallace SC, Swift SL. 2012.** Helodermatid lizard from the Mio-Pliocene oak-hickory forest of Tennessee, eastern USA, and a review of monstrosaurian osteoderms. *Acta Palaeontologica Polonica* **57**(1):111–121 DOI [10.4202/app.2010.0083](https://doi.org/10.4202/app.2010.0083).
- Molnar RE. 1996.** Preliminary report on a new ankylosaur from the Early Cretaceous of Queensland, Australia. *Memoirs of the Queensland Museum* **39**:653–668.
- Montanucci RR. 1987.** A phylogenetic study of the horned lizards, genus *Phrynosoma*, based on skeletal and external morphology. *Contributions in science/Natural History Museum of Los Angeles County* **113**:1–26.
- Moss ML. 1969.** Comparative osteology of dermal sclerifications in reptiles. *Acta Anatomica* **73**:510–533.
- Naish D, Martill DM. 2003.** Pterosaurs—a successful invasion of prehistoric skies. *Biologist* **50**(5):213–216.
- Naish D, Perron R. 2016.** Structure and function of the cassowary’s casque and its implications for cassowary history, biology and evolution. *Historical Biology* **28**(4):507–518 DOI [10.1080/08912963.2014.985669](https://doi.org/10.1080/08912963.2014.985669).
- Nance HA. 2007.** Cranial osteology of the African gerrhosaurid *Angolosaurus skoogi* (Squamata; Gerrhosauridae). *African Journal of Herpetology* **56**(1):39–75 DOI [10.1080/21564574.2007.9635552](https://doi.org/10.1080/21564574.2007.9635552).
- Norman DB. 2020.** Scelidosaurus harrisonii from the Early Jurassic of Dorset, England: cranial anatomy. *Zoological Journal of the Linnean Society* **188**(1):1–81 DOI [10.1093/zoolinnean/zlz074](https://doi.org/10.1093/zoolinnean/zlz074).
- Ósi A. 2005.** Hungarosaurus tormai, a new ankylosaur (Dinosauria) from the Upper Cretaceous of Hungary. *Journal of Vertebrate Paleontology* **25**(2):370–383 DOI [10.1671/0272-4634\(2005\)025\[0370:HTANAD\]2.0.CO;2](https://doi.org/10.1671/0272-4634(2005)025[0370:HTANAD]2.0.CO;2).
- Ósi A, Botfalvai G, Albert G, Hajdu Z. 2019.** The dirty dozen: taxonomical and taphonomical overview of a unique ankylosaurian (Dinosauria: Ornithischia) assemblage from the Santonian Iharkút locality, Hungary. *Palaeobiodiversity and Palaeoenvironments* **99**(2):195–240 DOI [10.1007/s12549-018-0362-z](https://doi.org/10.1007/s12549-018-0362-z).
- Ósi A, Makádi L. 2009.** New remains of *Hungarosaurus tormai* (Ankylosauria, Dinosauria) from the Upper Cretaceous of Hungary: skeletal reconstruction and body mass estimation. *Paläontologische Zeitschrift* **83**(2):227–245 DOI [10.1007/s12542-009-0017-5](https://doi.org/10.1007/s12542-009-0017-5).
- Ósi A, Pereda-Suberbiola X. 2017.** Notes on the pelvic armor of European ankylosaurs (Dinosauria: Ornithischia). *Cretaceous Research* **75**:11–22 DOI [10.1016/j.cretres.2017.03.007](https://doi.org/10.1016/j.cretres.2017.03.007).
- Ósi A, Pereda-Suberbiola X, Földes T. 2014.** Partial skull and endocranial cast of the ankylosaurian dinosaur Hungarosaurus from the Late Cretaceous of Hungary: implications for locomotion. *Palaeontologia Electronica* Article-nr.
- Ósi A, Prondvai E. 2013.** Sympatry of two ankylosaurs (*Hungarosaurus* and cf. *Struthiosaurus*) in the Santonian of Hungary. *Cretaceous Research* **44**:58–63 DOI [10.1016/j.cretres.2013.03.006](https://doi.org/10.1016/j.cretres.2013.03.006).

- Ósi A, Rabi M, Makádi L, Szentesi Z, Botfalvai G, Gulyás P, Godefroit P. 2012.** The Late Cretaceous continental vertebrate fauna from Iharkút (Western Hungary): a review. In: *Bernissart dinosaurs and early cretaceous terrestrial ecosystems*. Bloomington: Indiana University Press 532–569.
- Otto H. 1909.** Die Beschuppung der Brevilinguier und Ascalaboten. *Jena Z Naturwiss* 44:193–252.
- Paluh DJ, Griffing AH, Bauer AM. 2017.** Sheddable armour: identification of osteoderms in the integument of *Geckolepis maculata* (Gekkota). *African Journal of Herpetology* 66(1):12–24 DOI 10.1080/21564574.2017.1281172.
- Parks WA. 1924.** *Dyoplosaurus acutosquameus*: a new genus and species of armoured dinosaur; and notes on a skeleton of *Prosaurolophus maximus*. *University of Toronto Studies, Geological series* 18:1–35.
- Paulina-Carabajal A, Lee YN, Jacobs LL. 2016.** Neuroanatomy of the primitive nodosaurid dinosaur *Pawpawsaurus campbelli* and paleobiological implications of some endocranial features. *PLOS ONE* 11:e0150845.
- Penkalski P. 2001.** Variation in specimens referred to *Euoplocephalus tutus*. In: Carpenter K, ed. *The Armored Dinosaurs*. Bloomington: Indiana University Press, 363–385.
- Peterson JA, Bezy RL. 1985.** The microstructure and evolution of scale surfaces in xantusiid lizards. *Herpetologica* 41:298–324.
- Posso SR, Donatelli RJ. 2001.** Cranial osteology and systematic implications in Crotophaginae (Aves, Cuculidae). *Journal of Zoological Systematics and Evolutionary Research* 39:247–256 DOI 10.1046/j.1439-0469.2001.00178.x.
- Powell GL, Russell AP, Jamniczky HA, Hallgrímsson B. 2017.** Shape variation in the Dermatocranium of the greater short-horned Lizard *Phrynosoma hernandesi* (Reptilia: Squamata: Phrynosomatidae). *Evolutionary Biology* 44(2):240–260 DOI 10.1007/s11692-016-9403-6.
- Ramírez-Bautista A, Vitt L, Ramírez-Hernández A, Quijano FM, Smith G. 2008.** Reproduction and sexual dimorphism of *Lepidophyma sylvaticum* (Squamata: Xantusiidae), a tropical night lizard from Tlanchinol, Hidalgo, Mexico. *Amphibia-Reptilia* 29(2):207–216 DOI 10.1163/156853808784124938.
- Rand AS. 1961.** A suggested function of the ornamentation of East African forest chameleons. *Copeia* 1961(4):411–414.
- Romer AS. 1956.** *Osteology of the reptiles*. Chicago: University of Chicago Press, 772.
- Sampson SD, Ryan MJ, Tanke DH. 1997.** Craniofacial ontogeny in centrosaurine dinosaurs (Ornithischia: Ceratopsidae): taxonomic and behavioral implications. *Zoological Journal of the Linnean Society* 121(3):293–337.
- Schmidt K. 1938.** New crocodylians from the upper Paleocene of western Colorado. *Geological Series of the Field Museum of Natural History* 6(21):315–321.
- Smith KT. 2011.** The evolution of mid-latitude faunas during the Eocene: late Eocene lizards of the Medicine Pole Hills reconsidered. *Bulletin of the Peabody Museum of Natural History* 52(1):3–105 DOI 10.3374/014.052.0101.
- Smith GR, Lemos-Espinal JA, Ballinger RE. 1997.** Sexual dimorphism in two species of knob-scaled lizards (genus *Xenosaurus*) from Mexico. *Herpetologica* 53:200–205.

- Taylor GW, Santos JC, Perrault BJ, Morando M, Vásquez Almazán CR, Sites Jr JW. 2017.** Sexual dimorphism, phenotypic integration, and the evolution of head structure in casque-headed lizards. *Ecology and Evolution* 7(21):8989–8998 DOI 10.1002/ece3.3356.
- Tinius A. 2019.** Cranial Ornamentation in *Anolis baleatus*. Available at <https://www.anoleannals.org/2019/08/28/cranial-ornamentation-in-anolis-baleatus/> (accessed on 08 August 2019).
- Vaurie C. 1968.** Taxonomy of the Cracidae (Aves). *Bulleton of the American Museum of Natural History* 138:1–259.
- Vickaryous MK, Hall BK. 2008.** Development of the dermal skeleton in *Alligator mississippiensis* (Archosauria, Crocodylia) with comments on the homology of osteoderms. *Journal of Morphology* 269(4):398–422 DOI 10.1002/jmor.10575.
- Vickaryous MK, Maryańska T, Weishampel DB. 2004.** Ankylosauria. In: Weishampel DB, Dodson P, Osmolska H, eds. *The Dinosauria*. Second Edition. Berkeley: University of California Press, 363–392.
- Vickaryous MK, Russell A. 2003.** A redescription of the skull of *Euoplocephalus tutus* (Archosauria: Ornithischia): a foundation for comparative and systematic studies of ankylosaurian dinosaurs. *Zoological Journal of the Linnean Society* 137(1):157–186 DOI 10.1046/j.1096-3642.2003.00045.x.
- Vickaryous MK, Russell AP, Currie PJ. 2001.** Cranial ornamentation of ankylosaurs (ornithischia: thyrophora): reappraisal of developmental hypotheses. In: Carpenter K, ed. *The Armored Dinosaurs*. Bloomington and Indianapolis: Indiana University Press, 318–340.
- Vickaryous MK, Sire JY. 2009.** The integumentary skeleton of tetrapods: origin, evolution, and development. *Journal of Anatomy* 214(4):441–464 DOI 10.1111/j.1469-7580.2008.01043.x.
- Webster MS. 1992.** Sexual dimorphism, mating system and body size in New World blackbirds (Icterinae). *Evolution* 46(6):1621–1641.
- Wikelski M, Trillmich F. 1997.** Body size and sexual size dimorphism in marine iguanas fluctuate as a result of opposing natural and sexual selection: an island comparison. *Evolution* 51(3):922–936 DOI 10.1111/j.1558-5646.1997.tb03673.x.